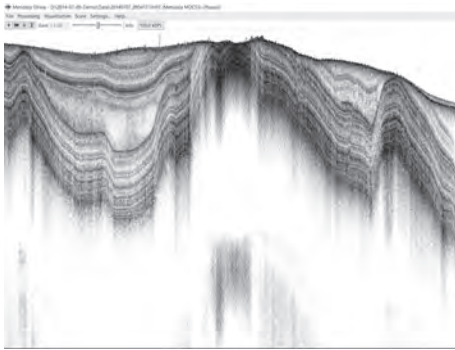
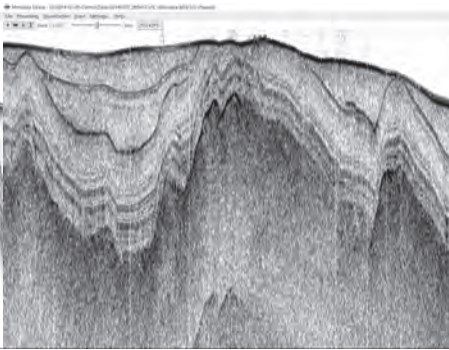


Single-pass, multi-frequency acquisition

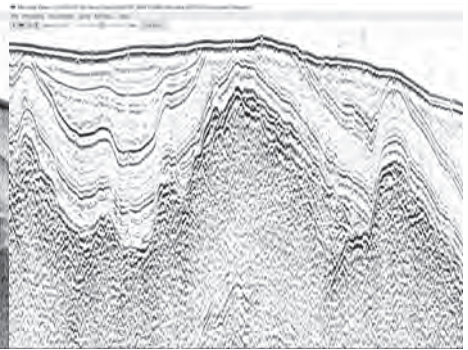
Chirp 20-50 kHz



Chirp 2-9 kHz

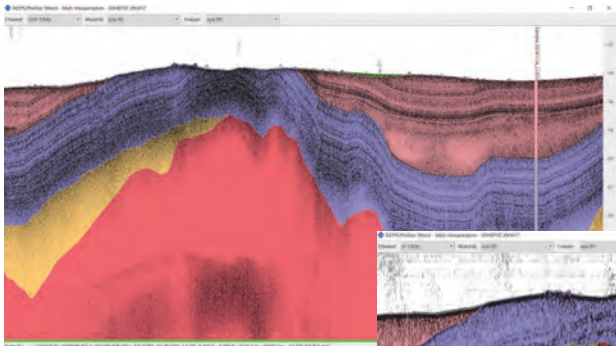


Boomer < 1 kHz

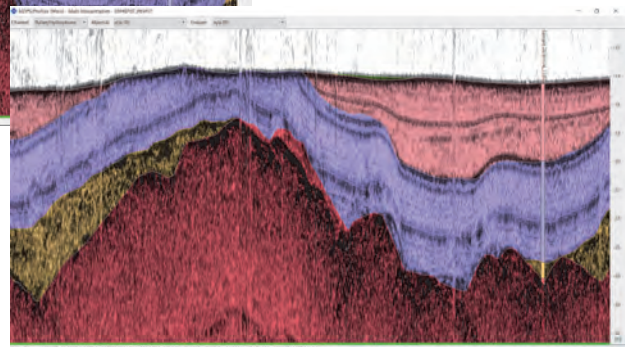
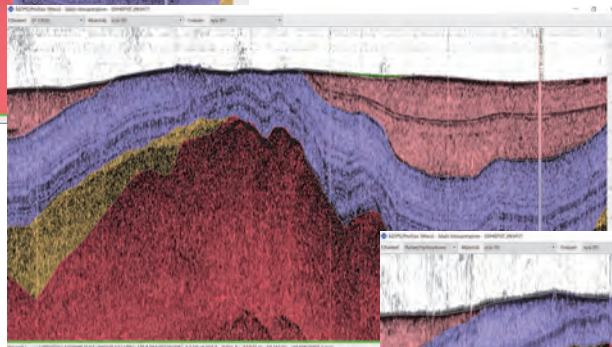


- Simultaneous multi-frequency (500 Hz – 50 kHz) sub-bottom profiling
- Combines ultra-high resolution (< 3 cm) chirp with deep penetration seismic reflection profiling
- Intelligent trigger management for minimizing cross-talk between acoustic subsystems
- Data acquisition from ancillary instruments (position, attitude, heading, sound velocity etc.)

Single-pass interpretation



- One single interpretation of all frequencies' profiles
- Semi-automatic reflector tracing
- Interpretation integrity checking tools
- Core sample integration



- Accurate positioning of pings/shot points
- Compensation for sound velocities and tides
- Export of interpretations into multiple formats

Additionally available subsystems

- Side-scan sonar
- Multibeam echosounder
- Magnetometer