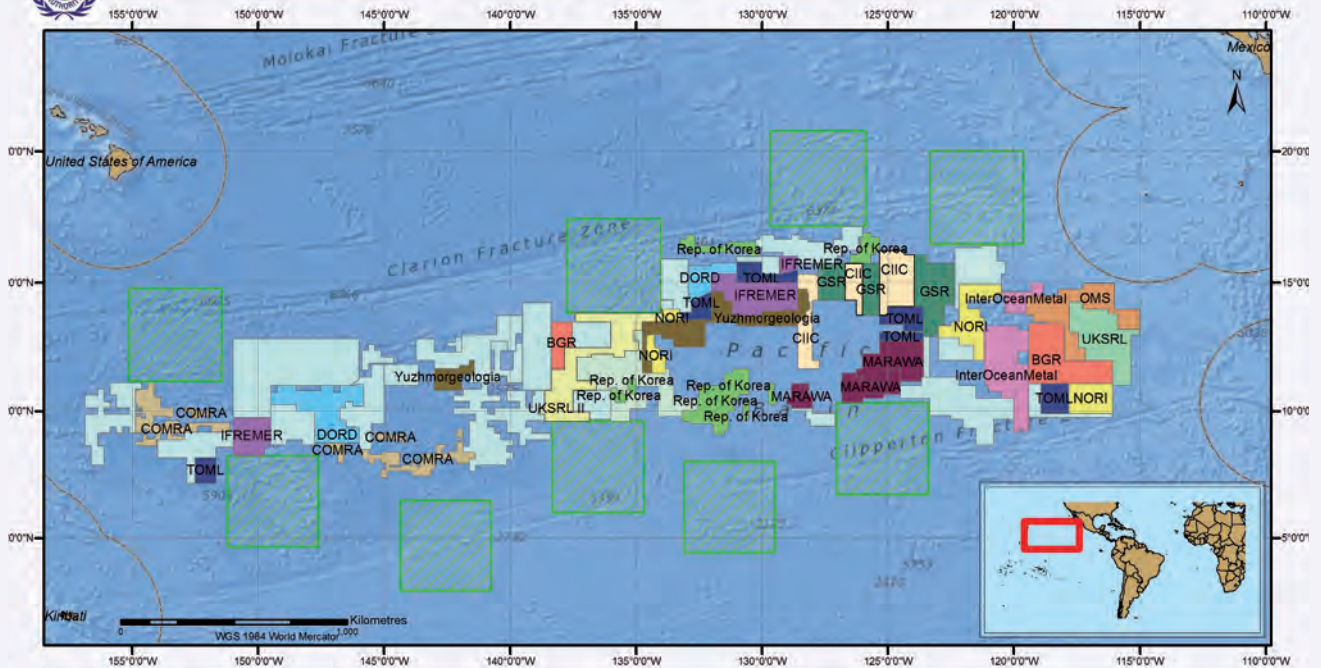


# Interoceanmetal otwiera podmorski sezam (patrz str. 454)



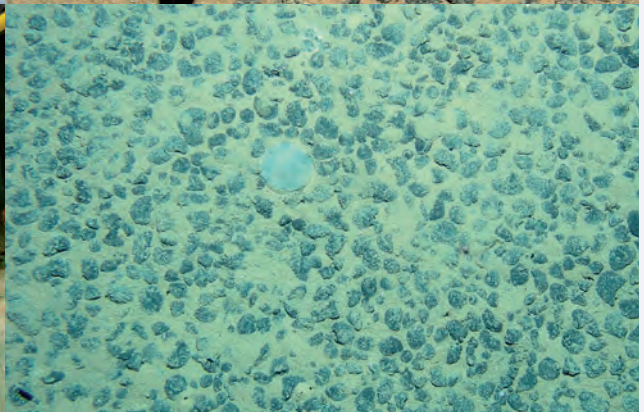
## Polymetallic Nodules Exploration Areas in the Clarion-Clipperton Fracture Zone



Ocean Mineral Singapore Pte Ltd. (OMS)	Government of the Republic of Korea
Cook Islands Investment Corporation (CIIC)	Institut français de recherche pour l'exploitation de la mer (IFREMER; France)
Marawa Research and Exploration Ltd (Kiribati)	Interoceanmetal (IOM; Bulgaria, Cuba, Czech Republic, Poland, Russian Fed., Slovakia)
Bundesanstalt für Geowissenschaften und Rohstoffe (BGR; Germany)	Nauru Ocean Resources Inc. (NORI; Nauru)
China Ocean Mineral Resources Research and Development Association (COMRA; China)	Tonga Offshore Mining Ltd (TOML, Tonga)
Deep Ocean Resources Development Company (DORD; Japan)	UK Seabed Resources Ltd (UKSRL I; UK)
G-TEC Minerals Resources NV (GSR; Belgium)	Yuzhmorgeologia (Russian Federation)
Reserved area*	Area of particular environmental interest (APEI)**
Exclusive Economic Zones	

\* In the case of polymetallic nodules, the so-called parallel system provides that each application for exploration by a developed State must cover two parts of 'equal estimated commercial value'. One part is allocated to the applicant and the other is to become the reserved area, which is set aside for the conduct of activities by the Authority or developing States.  
 \*\* In July 2012, the Authority adopted an environmental management plan for the Clarion-Clipperton Zone to be implemented on a provisional basis over an initial three-year period. The plan includes the designation of a network of areas of particular environmental interest (ISBA/18/C/22).

©International Seabed Authority, 24 July 2014. Background map: ESRI



Konkrety polimetaliczne z polskiej działki na Pacyfiku. Zdjęcia udostępnione przez Interoceanmetal