

SUCHA BESKIDZKA IG 1

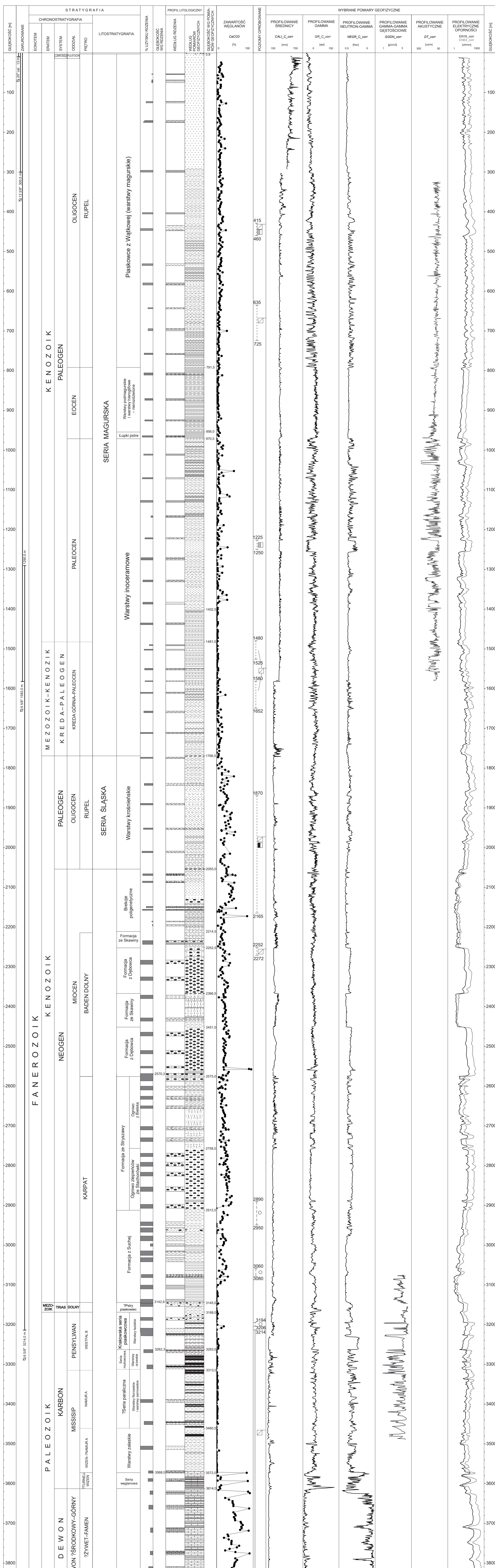


Fig. 3. Profil litologiczno-stratygraficzny otworu wiertniczego Sucha Beskidzka IG 1

SUCHA BESKIDZKA IG 1

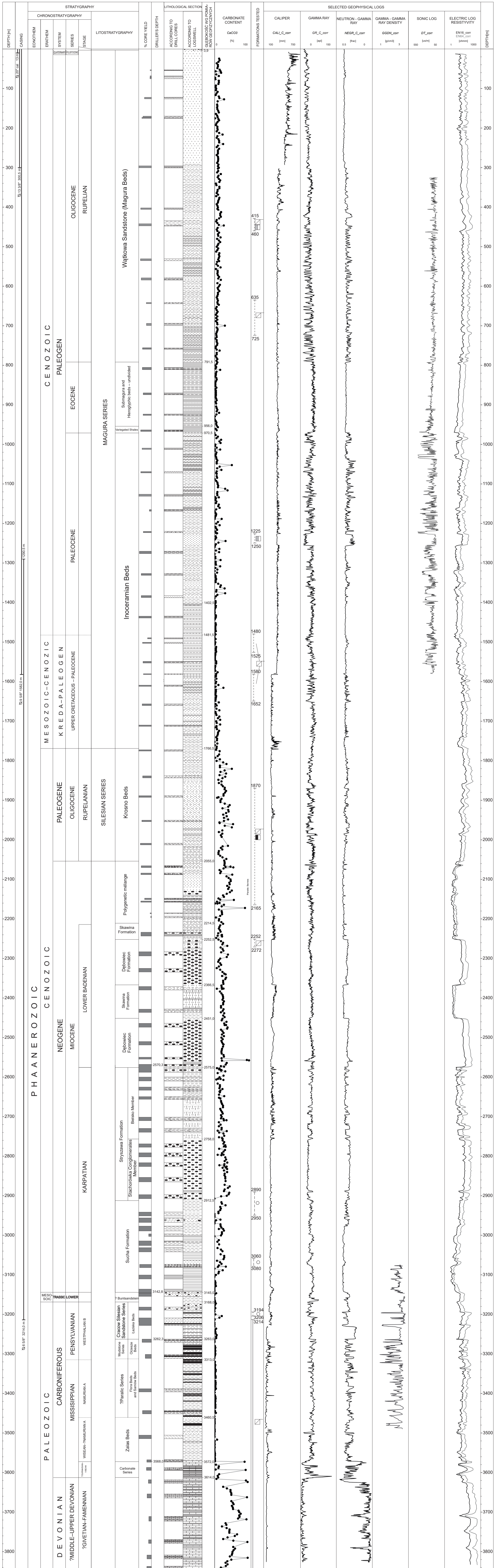


Fig. 3. Lithological-stratigraphical section of the Sucha Beskidzka IG 1 bor ehole

- sand and sandstone with grave

sandstone

mudstone

sandy mudstone

clay, clay shale

conglomerate with sandstone

coal

breccia with fragments of sandstones and mudstones

igneous rocks of the cieszynite type
- limestone

dolomitic limestone

marly limestone

sandy limestone

dolomite

calcareous mud

major tectonic boundaries
- 4204 formations tested

now inflow

mineralized water inflow

brine inflow

gas shows

gas-cut mud inflow

perforation

deposit sampler