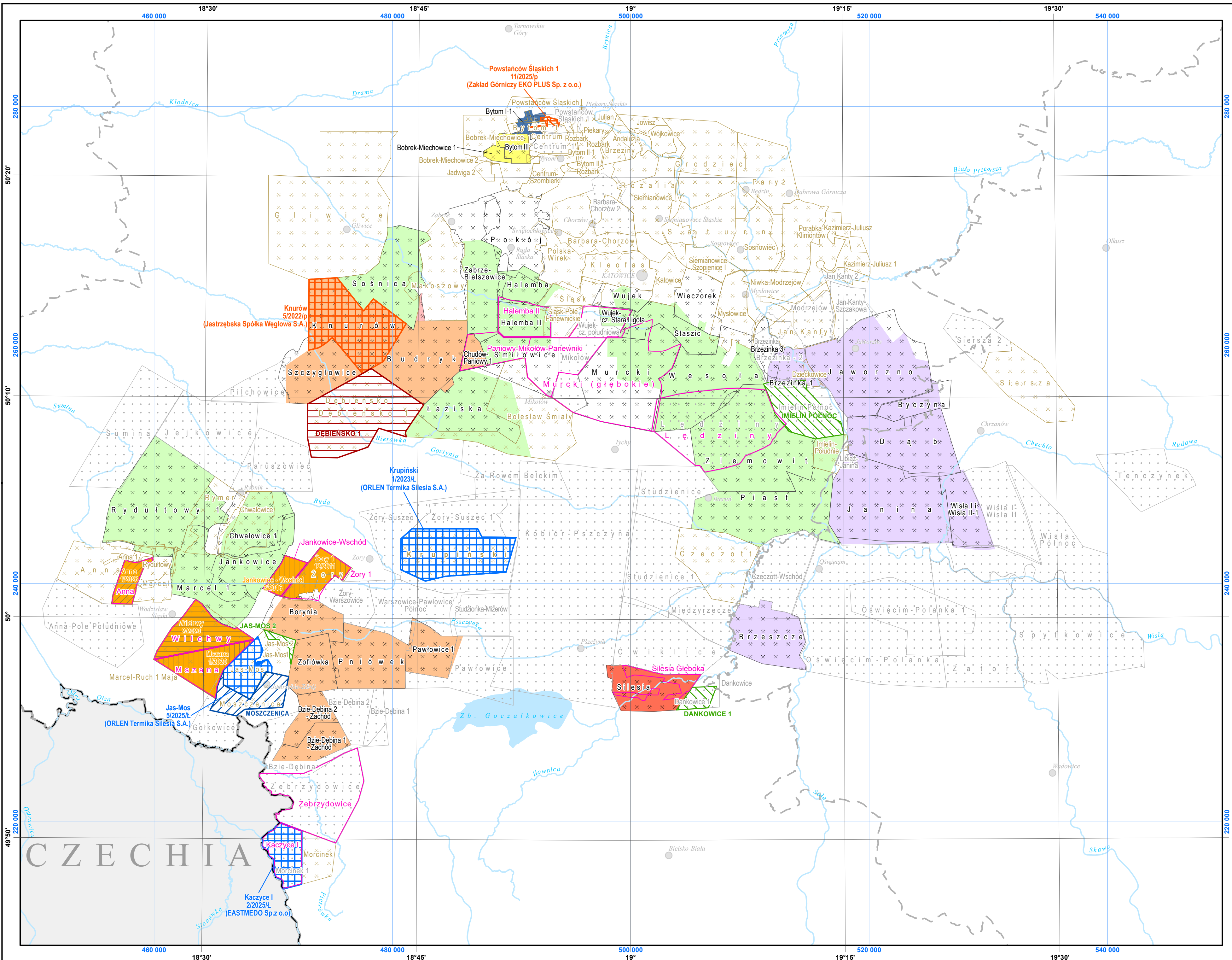


MAP OF CONCESSIONS FOR HARD COAL AND CBM PROSPECTING, EXPLORATION AND PRODUCTION IN THE UPPER SILESIAN COAL BASIN AS OF 31-03-2026



EXPLANATIONS

Prospecting and/or exploration of hard coal deposits and/or coal bed methane

- concessions for prospecting and/or exploration of hard coal deposits and coal bed methane as an accompanying mineral
Knurów 5/2022/p concession name
(Jastrzębska Spółka Węglowa S.A.) concession number (entrepreneur)
- pending applications submitted according to the article 28i of the Geological and Mining Law
DEBIENSKO 1 pending application name

Prospecting and/or exploration and production of coal bed methane

- concessions for prospecting and/or exploration and production of coal bed methane
Kaczyce 1 2/2023/L concession name
(EASTMEDO Sp.z o.o.) concession number (entrepreneur)
- pending applications for granting concession
MOSZCZENICA pending application name

Production of hard coal deposits and/or coal bed methane

Concessions for production of hard coal

- Polska Grupa Górnicza S.A.
- Południowy Koncern Węglowy S.A.
- Jastrzębska Spółka Węglowa S.A.
- Bumech S.A.
- Zakład Górnictwa "EKO-PLUS" Sp. z o.o.
- WĘGLOKOKS KRAJ S.A.
- Spółka Restrukturyzacji Kopalni S.A.

Concessions for production of coal bed methane

- GAZKOP-1 Sp. z o.o. **Zory 12/2011**
- GAZKOP-WILCHWY Sp. z o.o. **Wilchwy 2/2020**
- TERMOSPEC Sp. z o.o. **Anna 1/2026**

Pending applications for granting production concessions

- pending applications for production of hard coal and methane as an accompanying mineral
DANKOWICE 1 pending application name

Boundaries of documented hard coal deposits

- Wujek deposits with valid production concessions
- Rozalia deposits previously covered by production concessions
- Sumina deposits previously not covered by production concessions

Boundaries of documented coal bed methane deposits

- Zory 1

Administrative borders

- national border
- voivodeship border

Cities

- provincial cities
- county towns

Water features

- Ruda rivers
- lakes